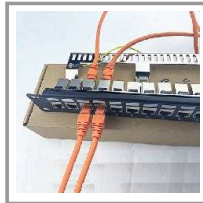


Mesh-Link 绍明

24-Port Cat6 Patch Panel - UTP, Non Punch RJ45, 1U, TAA

MODEL NUMBER: C24UP-C6A



Highlights

- Rated for 1 Gbps speeds for managing network connections in Ethernet applications
- 24 RJ45 ports front and rear RJ45 Female port for convenient plug and play
- Supports EIA/TIA T568A/B wiring standards RJ45 connector
- Mounts easily into 1U of space in your 19 in. rack for immediate use
- Compliant with the Federal Trade Agreements Act (TAA) for GSA Schedule purchases

Package Includes

C24UP-C6A 24-Port Cat6 Patch Panel

Manages and organizes Cat6 input/output cable connections in your high-density Gigabit Ethernet network.

Features

24-Port Patch Panel for High-Speed Cat6 Network Cabling

Organize and manage your high-density Cat6 application without taking up too much valuable rack space. This patch panel offers 24 RJ45 ports with both side. Both the front and rear connectors are clearly RJ45 female connector to help you plug and play. The patch panel supports wiring standards.

Condenses 24 Ports into Just 1U of Space in Your 19 in. Enclosure or Open Frame Rack The UL-approved patch panel supports mounting in 1U of EIA-standard 19-inch racks using the included hardware, freeing up valuable rack space for other equipment. It is fully rated for 1 Gbps data transfer speeds to connect security cameras, sensors, routers, computers, switches, wireless access points and other network devices in your network application.

TAA-Compliant for GSA Schedule Purchases

The C24UP-C6A is compliant with the Federal Trade Agreements Act (TAA), which makes it eligible for GSA (General Services Administration) Schedule and other federal procurement contracts.

Mesh-Link

绍明

Specifications

OVERVIEW	
UPC Code	9816773C6
Product Type	Rackmount
Technology	Cat5/5e; Cat6
CONNECTIONS	
Number of Ports	24
1 / 2	
Side Below - Connector 1	RJ45 (FEMALE)
Side TOP - Connector 1	RJ45 (FEMALE)
PoE Type	Type 2 PoE+ (30W, IEEE 802.3at)
PHYSICAL	
Color	Black
Shipping Dimensions (hwd / in.)	2.80 x 19.70 x 1.70
Shipping Dimensions (hwd / cm)	7.11 x 50.04 x 6.94
Shipping Weight (lbs.)	3.56
Shipping Weight (kg)	2.16
Unit Dimensions (hwd / in.)	2.100 x 18.900 x 1.000
Panel Style	RJ45
STANDARDS & COMPLIANCE	
Product Compliance	Trade Agreements Act (TAA)
WARRANTY & SUPPORT	
Product Warranty Period (Worldwide)	One Year limited warranty