

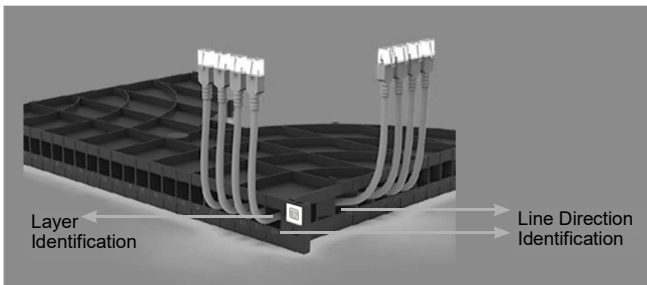
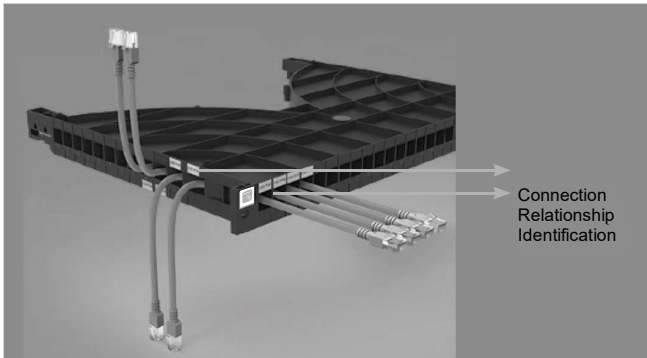
## INTRODUCTION

This rack cable management system is a smart solution for tidying up cables and neatly managing cabling inside a 19" rack. Ideal for keeping the wiring tidy and clean, essential for checking and replacing the cables.

## FUNCTION DESCRIPTION

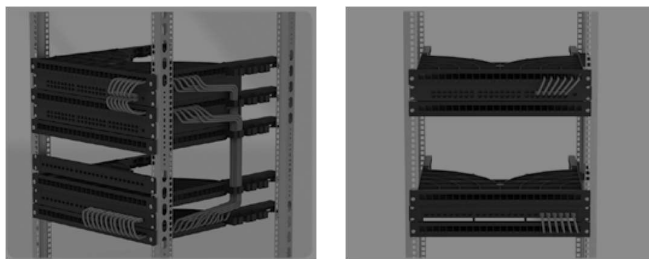
### Clear identification:

With layer identification, connection relationship identification, line direction identification

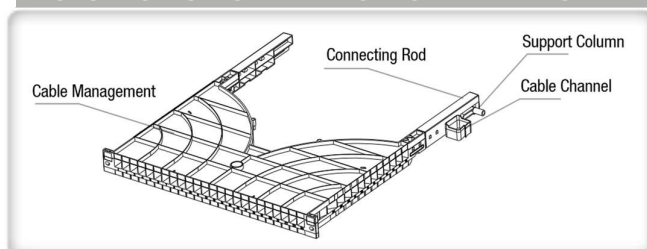


### Standardized and cost-effective construction Low cost of repeated cable management:

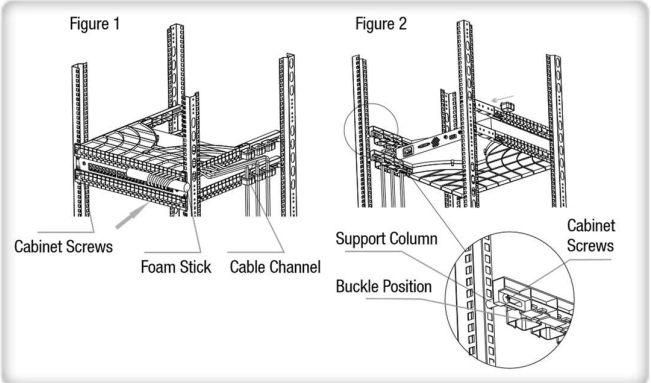
When a line is messy, it does not affect the overall One-to-one channel routing, non-professional line direction, convenient and quick recovery can achieve standardized wiring



## PRODUCT STRUCTURE AND COMPONENT NAMES



## INSTALLATION AND OPERATION INSTRUCTIONS



- Insert the cable management system into the rack cabinet in the direction indicated by the arrow in figure 1
- Fix to the front rails of the rack in the desired position using M6x16 screws
- Secure laterally to the rack using the M6x40 screws that will lock the cable management tray to the rear rails\*\* (figure 2)
- Insert the cable in the desired position and slide it into the guide until it comes out on the other side of the panel; it is possible to insert the cable both from the front and from the side holes
- After cable installation, it is possible to block the cable by inserting the rubber cable clamp on the front hole of the organizer
- For more careful and precise cable management, you can use the supplied foam tube to create an even bend for all cables. After extracting the cable from the hole, pass it on the surface of the foam stick and connect it to the equipment to give the correct bending radius, once this step has been carried out for all the cables, remove the foam stick
- One or more organizers can be used within the same rack cabinet depending on the installation requirements

\*\* For models with depths of 800 and 1000mm it is necessary to install the connection bracket using the 4 screws supplied; to fix the bracket to the rail, use the spacers and cable ties provided

## PACKING LIST

Item Name	Picture	Qty	Remark
Cable Management		1	
M6*16 Cabinet Screws		2	Used for fixing the front of the cable tray
M6*40 Cabinet Screws		2	Used for fixing the side of the cable tray
Spacers*		2	Used for fixing the side of the cable tray for 800 and 1000mm versions
Cable Channel*		6	For cables routing, only for 800 and 1000mm versions
Connecting Rod*		2	Used for cabinets with a depth of 800mm / 1000mm
Foam Stick		1	Auxiliary tools to ensure that the bending radians of the network cables are consistent
Cable Tie		2	Used for cabinets with a depth of more than 800mm